

UAR

2010



**Rensselaer Union**

Annual Report 2010

FISCAL YEAR 2011 (2010-2011)

# RENSSELAER UNION ANNUAL REPORT 2010



## CONTENTS

LETTERS TO THE UNION .....	3
THE YEAR IN REVIEW .....	7
THE ACTIVITY FEES .....	8
RECENT HISTORY .....	9
BUDGET COMPONENTS.....	11
BUDGET STATEMENTS .....	13
BUDGET COMPARISON .....	13
FULL BUDGET (2010-2011) .....	14
SEGMENT INFORMATION.....	15
APPENDICES .....	23

**Please note that the Union budget for FY11 is NOT final until the Rensselaer Polytechnic Institute Board of Trustees approve it officially at the end of February 2010. Until then, numbers are subject to change.** The Activity Fee recommendation and Annual Report were approved by the Rensselaer Student Senate on February 8, 2010 (14 Yea, 1 Nay, 1 Abstain). Both were also approved by the Fiscal Policy Sub-Committee on February 7, 2010 (11 Yea, 0 Nay, 1 Abstain). The information contained in this Annual Report is public information to all members of the RPI community.

All text, graphs, and other visual elements within this document are copyrighted properties of the Rensselaer Union. Express written approval from the Rensselaer Union Administration Office (518-276-6505) must be obtained in order to use any part of this document. Photographs are copyrighted works of the photographers used with permission, and may not be re-used without the permission of the photographer. Photographs are credited to the Transit Yearbook and Andrew Armenia.



# What is the Union?

## The Union is a student brain trust.

Each year, the Union Activity Fee funds innovative and imaginative activities sought after by an ever-changing pool of multi-talented, dynamic students. The Union and its 170+ student organizations are almost completely self-managed outside of the RPI administration.

## The Union is self-managed.

Within the Union, we have student-run institutions that mirror those of a small nation: we fund, govern, and staff a student judicial system that hears cases involving other RPI students, create and manage a budget of nearly nine million dollars, and design and implement legislative resolutions governing use of our facilities and systems.

## The Union is athletics.

All RPI-sponsored intercollegiate and intramural athletics are funded, like student clubs, with Activity Fee dollars. Student facilities, such as the Mueller Center, are also maintained by the Fee.

## The Union is unique.

Our student union is a rare breed unique to us and very few other schools in the United States; you can count the number of student-funded-and-managed college unions on two hands.

## The Union is progressive.

Some of the most future-focused developments at the Institute have happened because of the Union. Recent recycling programs, spirit initiatives, and innovative communication systems like Concerto (<http://concerto.rpi.edu>) all started with a little push from the Union.



# Letters to the Union

## From the Senate / E-Board Liaison:

On behalf of the Fiscal Policy Sub-Committee of the Rensselaer Union, I would like to introduce you to Union Annual Report 2010. This document was originally created in 2009 with the impetus to make the budgeting process more accessible, understandable and open to the entire Rensselaer community. With the help of students and staff members, the activity fees for both graduate and undergraduate students are determined through a comparison of this year's budgets and a projection of next year's fiscal activity. The Union Annual Report contains figures, calculations and graphs that will provide a comprehensible and complete view of the Rensselaer Union budget for the Fiscal Year 2010-2011.

With over 2000 online downloads of the 2009 Union Annual Report, it has proven to be a very effective document for delivering information about how the activity fees are generated and distributed every year. The goal of this year's Annual Report is to execute its original objective of explaining the budget while incorporating featured club and athletic highlights of the past fiscal year. Every year, the Union continues to expand its club and sports-related activities; it is important to acknowledge these changes and the success of these activities which occur within the Rensselaer Union.

Union Annual Report 2010 opens with a letter from our President of the Union, who will enlighten the Rensselaer community with the highlights of the many achievements of this year's budgeting procedure. It then leads into inspiring words from our Grand Marshal, who touches upon the positive developments of the Rensselaer Union within the past year. Then we get into the numbers: the undergraduate and graduate activity fees to balance next year's Union budget, past history in terms of expense and income activities, and financial perspective for how the Union compares to the other segments of the costs for attending Rensselaer. Next is the Full Budget statement, which will give you a birds-eye view of the entire budget. The final sections of the report include appendices that provide the given subsidy for every club and sports team under the Rensselaer Union.



Tequisha Hendrickson '10  
Student Senate / Executive Board Liaison



Tequisha  
Hendrickson  
Student Senate /  
Executive Board Liaison

## Dear Members of the Rensselaer Union,

What you have before you is a testament of the dedication and motivation seen in the student body at RPI. The Union Annual Report summarizes the results of a process which involves hundreds of devoted students, making our Student Union a truly unique organization. It is very hard to find a similar example of student initiative anywhere; the Rensselaer Student Union is truly a student funded, student run organization, and there is no better way to deliver exactly what students want.

Here, students have control over their Activity Fee dollars, which go to fund student activities and athletics, study, workout, and programming facilities, and support programs ranging from administration and the fine arts to legal services. When a group on campus wants to form a club, the request is heard by students, approved by students, funded by students, and even budgeted by students. These aspects of campus life are not just about student input; as a member of the Rensselaer Union, they are directly under your control.

Every year, hundreds of student leaders come together to create a budget for the Union. After club officers develop proposed budgets, the Union Executive Board and advisors review every budget line-by-line. The board strives for consistency, and looks to support activities which will benefit the student body, and add culture, opportunity, and fun to campus life.

In many ways, the percent change in the Activity Fee is a barometer, measuring the vitality and success of both the previous and coming years.

Funding comes from the student Activity Fee and operations, such as the Rensselaer Bookstore, within the Union. Uncontrollable changes can occur such as inflation or changes in scheduling, so some increase is to be expected every year. Of course, the fee, a tax on the student body, should be kept under control. Pending strong argument or motivation, increase should be on par with or below that of tuition, inflation, and other similar indicators.

This year's increase was a very reasonable 3.28% increase for undergraduates and 3.44% increase for graduates. Many forces pushed for an increased budget. A decrease in club funding the previous year would have anticipated a bounce back. A longer winter break forced costs for intercollegiate athletic recess feeding to increase. The addition of ECAV added some responsibility to the Union's funding.

The increased costs are a mere \$17.50 and \$10.00 for each undergraduates and graduates respectively. A nearly insignificant cost compared to what we get: newly funded clubs including RPISEC (a computer security club) and the Weight-Lifting Club,



Alexander Franz

120th President of the  
Union



the addition of a women's team to the Water Polo Club, and support for the future of Winter Carnival.

Considering all of these issues, along with increased costs for goods and services sprinkled throughout budgets, the minimal increase is a testament to conscience budgeting from the club and administrative level right through to the Executive Board's deliberation.

I encourage you to explore this document for details. Ask questions of your Student Government, and get involved. This will be the second year of our revamped Annual Report, which has enabled us to make great strides in the effort of building transparency in Union financial management. As paying members of the Rensselaer Union, you deserve to know what is going on, and you deserve to have a voice. I encourage you to take advantage of everything we have to offer and make the Rensselaer Student Union yours.



Alexander Franz '10  
120th President of the Union



## To Members of the Rensselaer Union,

The Student Union is a unique environment; it is an organization truly designed for students as it is governed by students. It is this relationship of the fiduciary Executive Board and legislative Student Senate that successfully guides the scope of our Rensselaer Union. I applaud the dedication and hard work of the Union Executive Board, the President of the Union, and the Union administration staff; these students and staff members are the true stewards of our Rensselaer Union.



Each year, the Activity Fee Fiscal Policy Sub-Committee, with membership from both the Student Senate and Executive Board, creates an activity fee that is both fiscally sound and responsible for the Rensselaer Union and the students that ultimately financially support it.

We have participated in teamwork, community service, leadership, self-development, and innovation; a Rensselaer education goes far beyond the classroom, and that is what counts. Today's Rensselaer student knows that we are of an alma mater that empowers change; and we're doing just that. The Student Union allows us to reach beyond convention.

Students at Rensselaer do great things through the Student Union. They become citizens of the greater community by being members in organizations such as Habitat for Humanity or Big Brothers, Big Sisters. They become leaders through club leadership opportunities or by taking advantage of professional development programs through the Archer Center for Student Leadership. They become friends by meeting their fellow students in over 180 clubs that the Rensselaer Union supports.

What follows in this report is a successful culmination of the budgeting process and policy discussion, throughout of which has been transparent and communicative in all attempts to the community at large. The Union Annual Report has reinvented what we see the Student Union as, explore through it and discover for yourself.

Michael F. Zwack '11  
143rd Grand Marshal





## THE YEAR IN REVIEW

### A Look Back at Some Highlights of the Rensselaer Union in 2009

It is important to remember that the Union Activity Fees were started to help subsidize those unique activities which would be out of reach or difficult to sustain as individuals or as small groups of members. The money given to funded organizations each year is distributed by the Union Executive Board with the understanding that it will be used to enhance the Union community as a whole. Fortunately, our many student-operated organizations continue to push the boundaries of the imagination, enriching the entire campus with a huge amount of vibrant, intriguing activities.

The Year 2009 was a great time for the Rensselaer Union's many student-run clubs and organizations. New clubs were formed to expand the overall breadth of activities supported by the Union and its Activity Fees. Here are just a handful of the many great things that happened in 2009 at the Union:

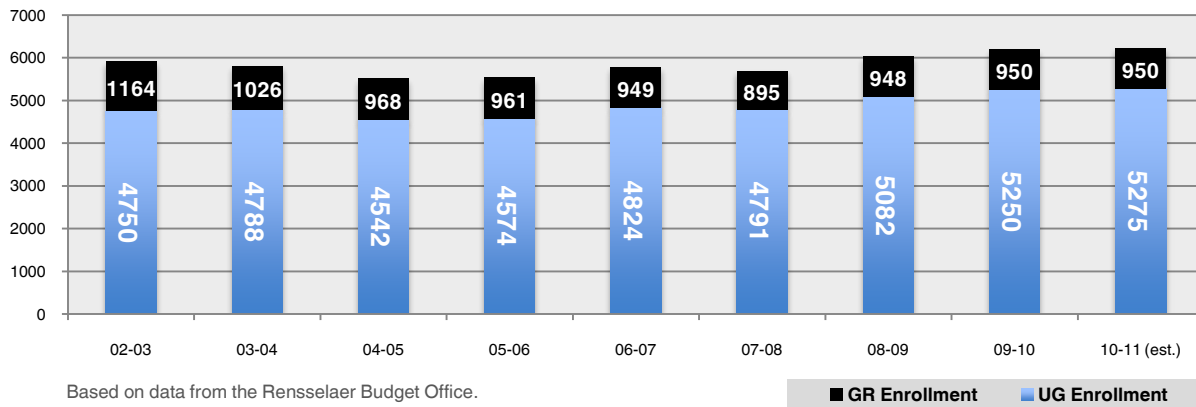
- RPI TV launched a brand new website at <http://rplitv.org> built for streaming videos to share its services and productions more effectively with the campus community and the world at large.
- The Curling Club sent not just one, but three, teams to play in the Schenectady 10 Year and Under Bonsel. One of the teams won its bracket.
- Aspiring for a greater relationship with the city of Troy and its prospective youth, the Black Students Alliance reached out to youth from Troy YMCA to participate in Black History Month forum series, engaging in a thought-provoking discussion about African-American culture.
- Many performing arts clubs, including the Jazz Repertory and Contemporary Ensembles, the Swing Band, and Symphonic Orchestra performed concerts in the new EMPAC Concert Hall to huge audiences.
- The RPI Archery Club was able to utilize Union funds to upgrade its range with a new net, which has improved the shooting experience and safety at the range. The club also hired a coach for the first time to mentor aspiring archers.
- The RPI Waterpolo team formed a special team for women interested in the sport.
- RPI SEC, a newly funded organization for FY11, placed highly in several world-renowned international network security tournaments. The club is quickly making a name for itself, attracting talent from RPI's many brilliant computer security enthusiasts.
- The ECAV Stadium and training facilities officially came online, providing incredible new facilities for basketball, football, soccer, and many other sports, a new training center and wave pool, and an excellent Jumbotron for highlighting those excellent saves by Rensselaer athletes on the field.



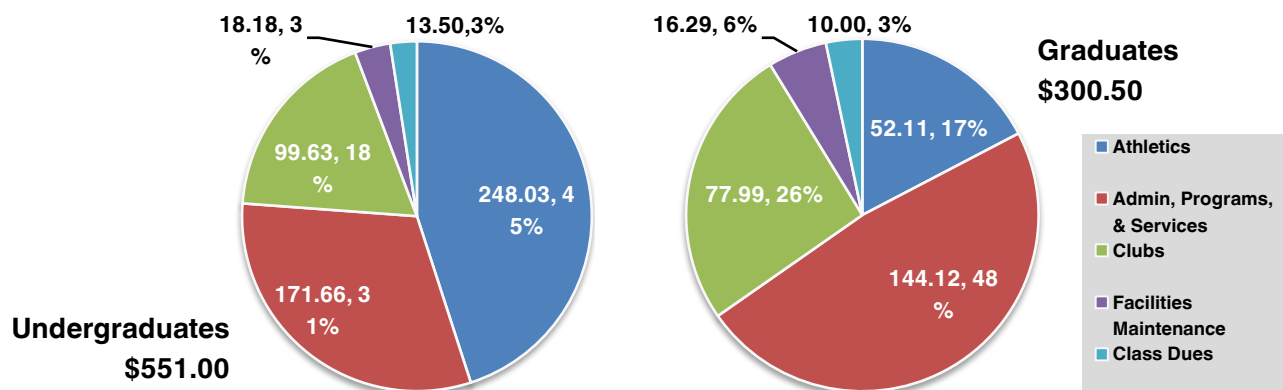
## THE ACTIVITY FEES

	Last Year's Fee 2009-10	This Year's Fee 2010-11	Difference
Undergraduate <b>Standard Fee</b>	\$520.00	\$537.50	<b>+ \$17.50 (3.37%)</b>
Undergraduate <b>Class Dues</b>	\$13.50	\$13.50	\$0.00 (0.00%)
Undergraduate <b>Total Fee</b>	<b>\$533.50</b>	<b>\$551.00</b>	<b>+ \$17.50 (3.28%)</b>
Graduate <b>Standard Fee</b>	\$280.50	\$290.50	<b>+ \$10.00 (3.56%)</b>
Graduate <b>Class Dues</b>	\$10.00	\$10.00	\$0.00 (0.00%)
Graduate <b>Total Fee</b>	<b>\$290.50</b>	<b>\$300.50</b>	<b>+ \$10.00 (3.44%)</b>
<b>Summer 2011 Fee (per week)</b>	\$11.00	\$11.00	\$0.00 (0.00%)

## STUDENT ENROLLMENT HISTORY AND 2010-2011 PROJECTION



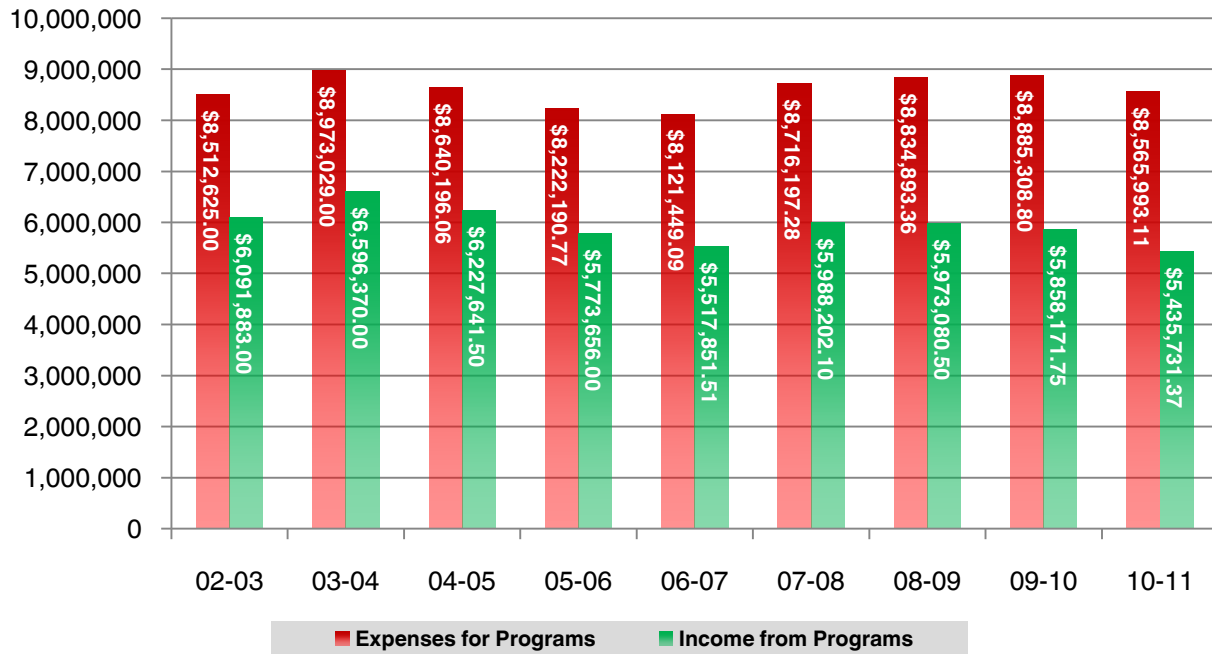
## WHERE WILL MY MONEY GO?



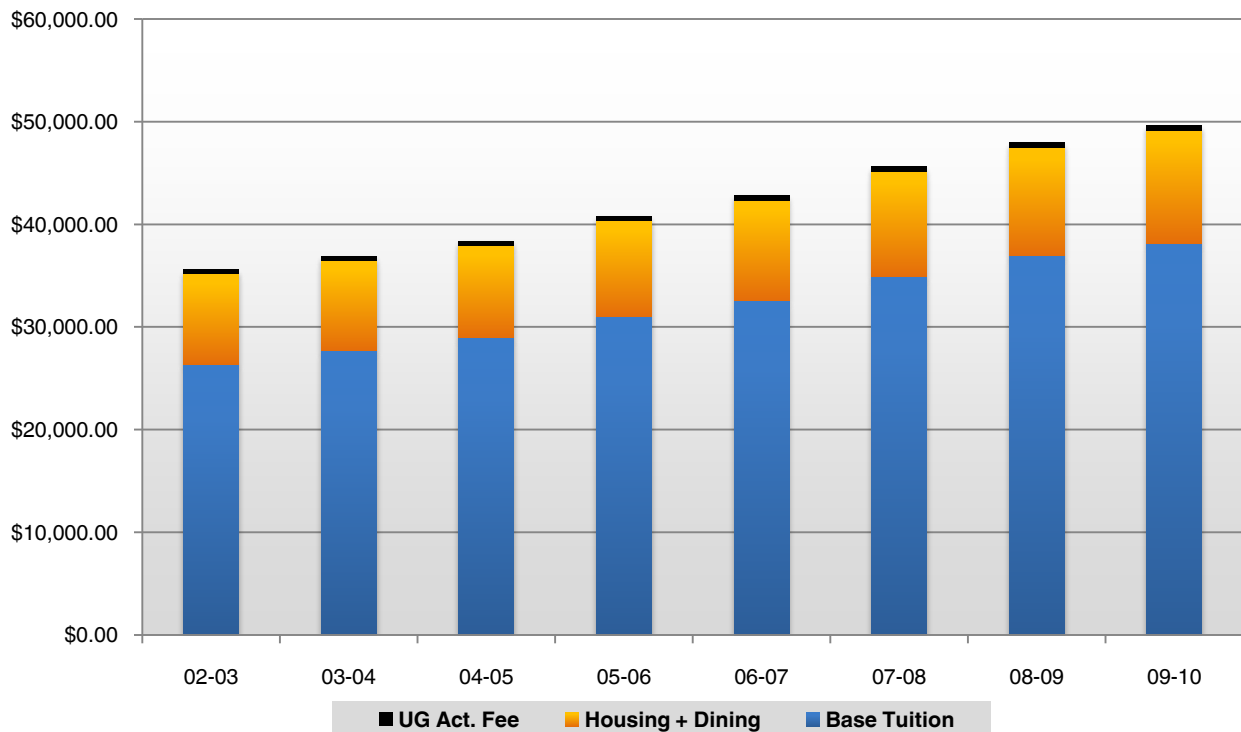
## RECENT HISTORY

Your Union Activity Fee is used each year to fund the many innovative, exciting, and diverse activities of the RPI student body. The Activity Fee covers the gap between the Union's total program expenses and income.

### Growth of the Budget (2002-2011)



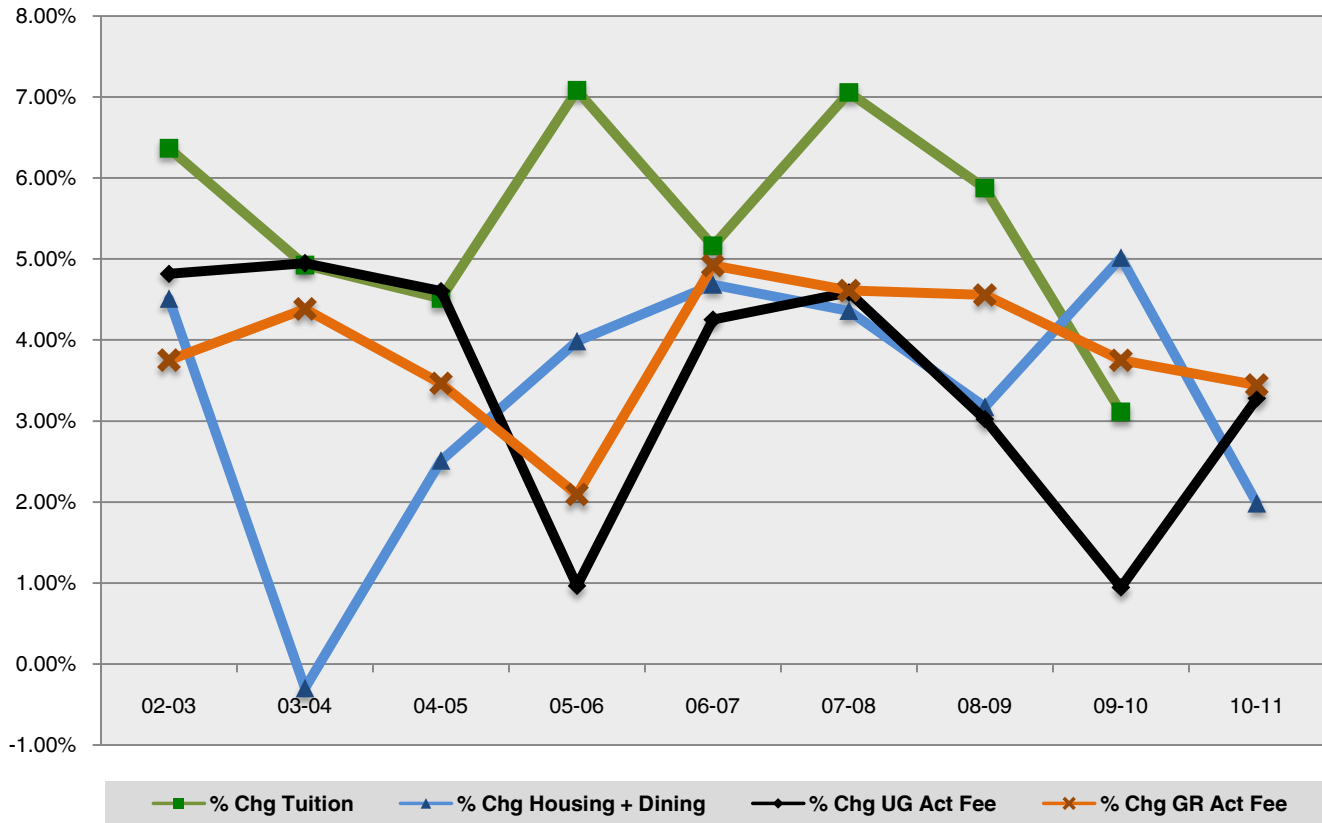
### Total UG Costs of Attendance



Tuition figures taken from RPI website. Housing and dining amounts reflect the sum of the average housing and dining packages.



### Percent Changes in RPI Costs

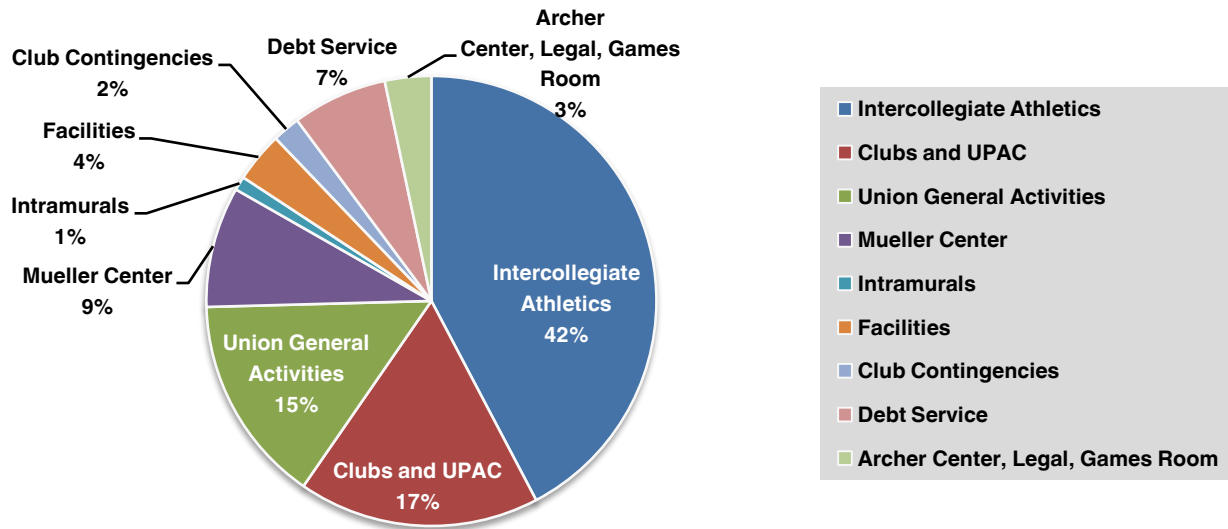


	02-03	03-04	04-05	05-06	06-07	07-08	08-09	09-10	10-11 (est.)
<b>UG Enrollment</b>	4750	4788	4542	4574	4824	4791	5082	5250	5275
<b>GR Enrollment</b>	1164	1026	968	961	949	895	948	950	950
<b>UG Standard Fee</b>	\$414.00	\$435.00	\$455.00	\$460.00	\$480.00	\$502.50	\$515.00	\$520.00	\$537.50
<b>UG Class Dues</b>	\$10.50	\$10.50	\$10.50	\$10.50	\$10.50	\$10.50	\$13.50	\$13.50	\$13.50
<b>UG Full Fee</b>	\$424.50	\$445.50	\$465.50	\$470.50	\$490.50	\$513.00	\$528.50	\$533.50	\$551.00
<b>GR Standard Fee</b>	\$215.00	\$224.70	\$232.70	\$237.70	\$249.70	\$261.50	\$273.00	\$280.50	\$290.50
<b>GR Class Dues</b>	\$6.30	\$6.30	\$6.30	\$6.30	\$6.30	\$6.30	\$7.00	\$10.00	\$10.00
<b>GR Full Fee</b>	\$221.30	\$231.00	\$239.00	\$244.00	\$256.00	\$267.80	\$280.00	\$290.50	\$300.50
<b>Summer Fee</b>	\$8.75	\$9.00	\$9.35	\$9.55	\$10.00	\$10.50	\$11.00	\$11.00	\$11.00
<b>UG Base Tuition</b>	\$26,400.00	\$27,700.00	\$28,950.00	\$31,000.00	\$32,600.00	\$34,900.00	\$36,950.00	\$38,100.00	N/A
<b>Avg Room + Avg Board</b>	\$8,781.33	\$8,755.33	\$8,975.33	\$9,333.14	\$9,770.51	\$10,196.64	\$10,520.25	\$11,047.95	\$11,267.20

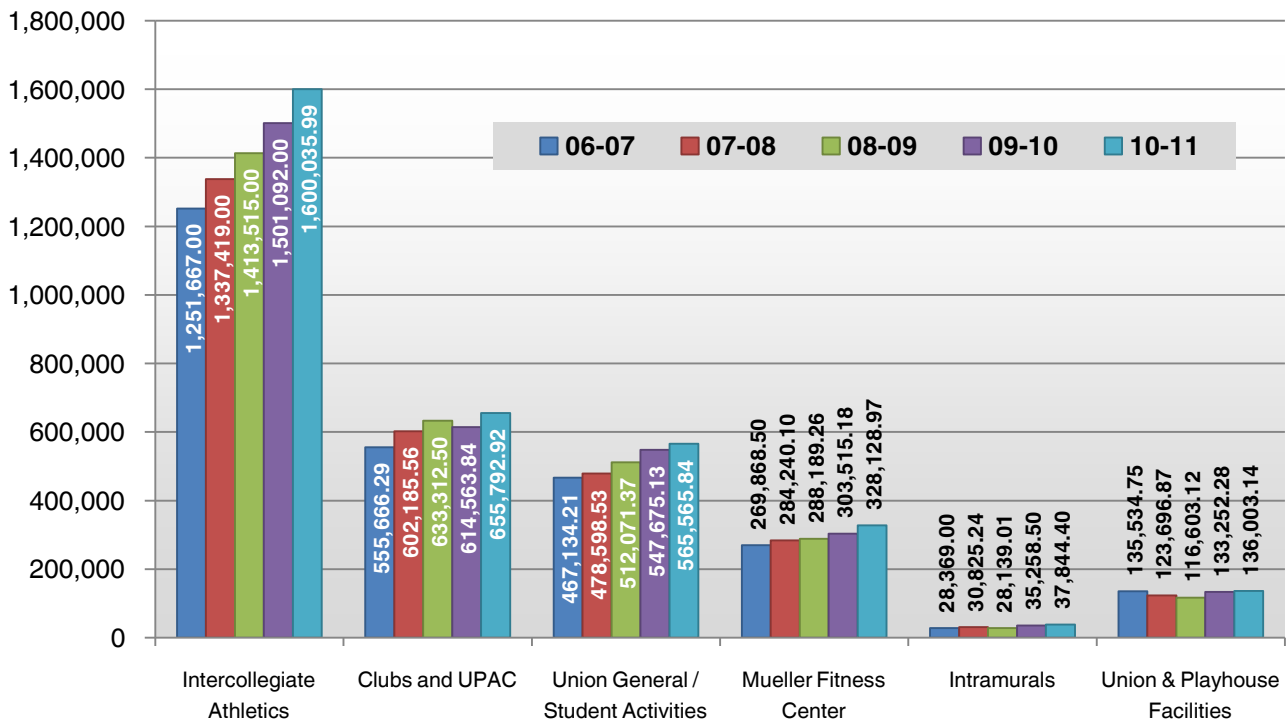
## BUDGET COMPONENTS

### MAJOR EXPENSE ACTIVITIES

A large majority of the Union budget consists of activities that require more money than they generate. The expenses-accruing programs most likely to fluctuate are shown in the column chart below.



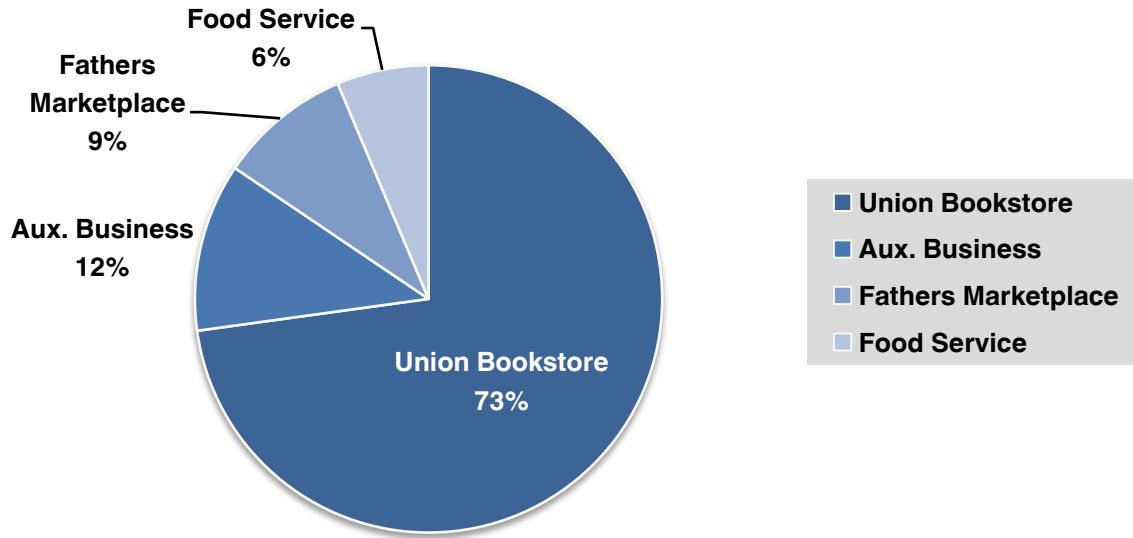
Comparison of Selected Expense Projections (Last 5 Years)



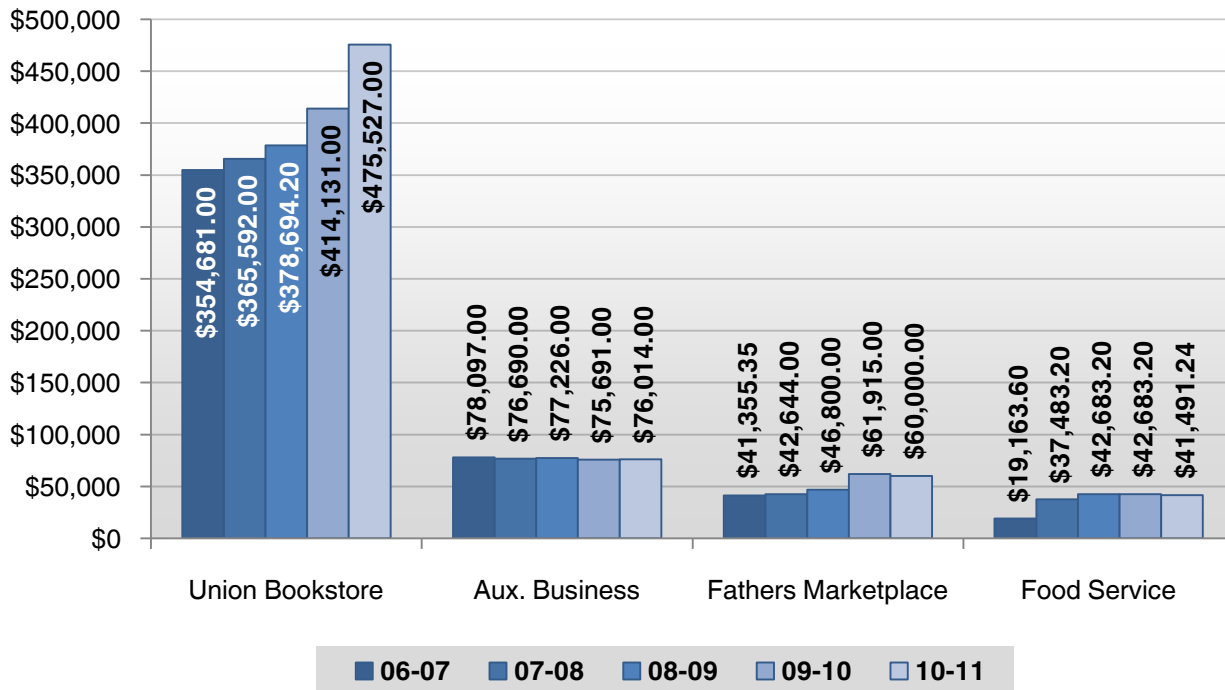


## INCOME ACTIVITIES

The Activity Fees are used as a means of balancing out the expenses within the Union Budget. The Union also collects income from services and other activities within the building.



### Comparison of Income Projections (Last 5 Years)



## BUDGET STATEMENTS

BUDGET COMPARISON						
Item	2009-2010			2010-2011		
	Expense	Income	Net	Expense	Income	Net
Union General / Student Activities	581,565.73	33,890.60	<b>547,675.13</b>	599,170.04	33,604.20	<b>565,565.84</b>
Archer Center SLD	85,000.00	0.00	<b>85,000.00</b>	85,000.00	0.00	<b>85,000.00</b>
Clubs and UPAC	1,206,179.99	591,616.15	<b>614,563.84</b>	1,287,357.00	631,564.08	<b>655,792.92</b>
Club Contingency	30,000.00	0.00	<b>30,000.00</b>	25,000.00	0.00	<b>25,000.00</b>
Club Travel Contingency	50,000.00	0.00	<b>50,000.00</b>	50,000.00	0.00	<b>50,000.00</b>
Student Legal Service	33,075.00	0.00	<b>33,075.00</b>	34,067.28	0.00	<b>34,067.28</b>
Union & Playhouse Facilities	133,252.28	0.00	<b>133,252.28</b>	136,003.14	0.00	<b>136,003.14</b>
Debt Service, Debt Repayment, Club Return	284,889.32	0.00	<b>284,889.32</b>	258,889.44	0.00	<b>258,889.44</b>
Mueller Fitness Center	356,265.18	52,750.00	<b>303,515.18</b>	386,378.97	58,250.00	<b>328,128.97</b>
Intercollegiate Athletics	1,501,092.00	0.00	<b>1,501,092.00</b>	1,600,035.99	0.00	<b>1,600,035.99</b>
Intramurals	51,758.50	16,500.00	<b>35,258.50</b>	54,594.40	16,750.00	<b>37,844.40</b>
Fathers	71,757.00	133,672.00	<b>-61,915.00</b>	35,314.55	95,314.55	<b>-60,000.00</b>
Food Service	44,316.80	87,000.00	<b>-42,683.20</b>	45,508.76	87,000.00	<b>-41,491.24</b>
Games Area	7,536.00	4,300.00	<b>3,236.00</b>	9,116.00	2,150.00	<b>6,966.00</b>
Clubhouse Pub	49,500.00	49,500.00	<b>0.00</b>	56,050.00	56,050.00	<b>0.00</b>
Bookstore	4,267,839.00	4,681,970.00	<b>-414,131.00</b>	3,767,891.00	4,243,418.00	<b>-475,527.00</b>
Aux. Businesses / Vendors	1,932.00	77,623.00	<b>-75,691.00</b>	1,277.00	77,291.00	<b>-76,014.00</b>
Young Actors Guild	129,350.00	129,350.00	<b>0.00</b>	134,339.54	134,339.54	<b>0.00</b>
<b>TOTAL</b>	<b>8,885,308.80</b>	<b>5,858,171.75</b>	<b>3,027,137.05</b>	<b>8,565,993.11</b>	<b>5,435,731.37</b>	<b>3,130,261.74</b>
Summer Activity Fee			20,000.00			20,000.00
Regular Year Activity Fee			3,007,137.05			3,110,261.74
Increase to Balance Budget						<b>103,124.69</b>

### Notes:

- The Clubhouse Pub has a balanced budget each year and thus does not contribute income or require additional funding in the Activity Fee.
- Continuing studies students pay no Activity Fee and cannot vote in elections.
- The Activity Fee per student is calculated by taking the total academic year fee for undergraduates and graduates separately and dividing them by their respective enrollment numbers. The individual fee is then rounded up to the nearest \$0.50. This amount is not the complete total paid by each student, as it does not yet include class dues.



## FULL BUDGET (2010-2011)

Expense Activities		Net Expense	Undergraduate	Graduate
<i>Determined by Undergraduate/Graduate Enrollment:</i> <b>84.7% UG / 15.3% GR</b>				
Union Administration Office and Services		565,565.84	479,034.27	86,531.57
Service Clubs (Appendix C)		448,824.76	380,154.57	68,670.19
Club Contingency		25,000.00	21,175.00	3,825.00
Club Travel Contingency with Grad Eligibility		23,100.00	19,565.70	3,534.30
Student Legal Service		34,067.28	28,854.99	5,212.29
Facilities (Union General & Playhouse)		136,003.14	115,194.66	20,808.48
Debt Service for Union Renovation (Year 11 of 30)		258,889.44	219,279.36	39,610.08
Mueller Fitness Center		328,128.97	277,925.24	50,203.73
ICA Men's Ice Hockey		402,983.48	341,327.01	61,656.47
Intramurals (Without Ice Hockey)		30,679.58	25,985.60	4,693.98
	<b>Subtotal</b>	<b>2,253,242.49</b>	<b>1,908,496.39</b>	<b>344,746.10</b>
<i>Determined by Undergraduate/Graduate Participation:</i>				
ICA (All Div III and Div I Women's Ice Hockey)	<b>100% UG / 0% GR</b>	1,197,052.51	1,197,052.51	0.00
Intramural Ice Hockey	<b>97% UG / 3% GR</b>	7,164.82	6,949.88	214.94
General Clubs (Appendix B)		206,968.16	183,373.79	23,594.37
Club Travel Contingency without Grad Eligibility		26,900.00	26,900.00	0.00
Archer Center SLD	<b>97% UG / 3% GR</b>	85,000.00	82,450.00	2,550.00
	<b>Subtotal</b>	<b>1,523,085.49</b>	<b>1,496,726.18</b>	<b>26,359.31</b>
<b>TOTAL NET EXPENSES</b>		<b>3,776,327.98</b>	<b>3,405,222.56</b>	<b>371,105.42</b>
Income Activities		Net Income	Undergraduate	Graduate
<i>Determined by Undergraduate/Graduate Enrollment:</i> <b>84.7% UG / 15.3% GR</b>				
Fathers Marketplace		60,000.00	50,820.00	9,180.00
Food Service		41,491.24	35,143.08	6,348.16
Games Area		-6,966.00	-5,900.20	-1,065.80
Auxiliary Business / Vendors		76,014.00	64,383.86	11,630.14
	<b>Subtotal</b>	<b>170,539.24</b>	<b>144,446.74</b>	<b>26,092.50</b>
<i>Determined by Undergraduate/Graduate Participation:</i>				
Clubhouse Pub	<b>50% UG / 50% GR</b>	0.00	0.00	0.00
Union Bookstore	<b>86.3% UG / 13.7% GR</b>	475,527.00	410,379.80	65,147.20
	<b>Subtotal</b>	<b>475,527.00</b>	<b>410,379.80</b>	<b>65,147.20</b>
<b>TOTAL NET INCOME</b>		<b>646,066.24</b>	<b>554,826.54</b>	<b>91,239.70</b>
Activity Fee Calculation		Net Income	Undergraduate	Graduate
Total Net Expenses Less Total Net Income		3,130,261.74	2,850,396.03	279,865.71
Number of Continuing Studies Participants		0	0	0
Summer Fee		20,000.00	16,000.00	4,000.00
Non-local Co-op Participants Contribution		0.00	0.00	0.00
<b>TOTAL ACADEMIC YEAR ACTIVITY FEE</b>		<b>3,110,261.74</b>	<b>2,834,396.03</b>	<b>275,865.71</b>
<b>FEE PER STUDENT</b>			<b>537.50</b>	<b>290.50</b>

## SEGMENT INFORMATION

Here's a guide to the calculations behind each of the Union Activity Fees. The following pages detail selected parts of the Union's operations as shown here.

$$\text{Total UG Fee} = \text{Total UG Class Dues} + \left( \text{Total Net Expenses (UG)} - \text{Total Net Income (UG)} - \text{Summer Fee Collections} \right)$$

Page 16

$$\text{Total GR Fee} = \text{Total Grad Council Dues} + \left( \text{Total Net Expenses (GR)} - \text{Total Net Income (GR)} - \text{Summer Fee Collections} \right)$$

Page 16

$$\text{Total Net Expenses (UG or GR)} = \left( \begin{array}{l} \text{Administration \& Services} \\ \text{Service Clubs} \\ \text{Club / Travel Contingency} \\ \text{Facilities} \\ \text{Mueller Center} \\ \text{ICA Men's Ice Hockey} \\ \text{Intramurals (No Ice Hockey)} \end{array} \right) \times \% \text{ UG or GR} + \left( \begin{array}{l} \text{ICA Contribution} \\ \text{Intramural Ice Hockey Contribution} \\ \text{General Clubs Contribution} \\ \text{Archer Center Contribution} \end{array} \right)$$

Page 17

Page 18

$$\text{Total Net Income (UG or GR)} = \left( \begin{array}{l} \text{Fathers Marketplace} \\ \text{Food Service} \\ \text{Games Area} \\ \text{Aux. Business} \end{array} \right) \times \% \text{ UG or GR} + \left( \begin{array}{l} \text{Clubhouse Pub Contribution} \\ \text{Bookstore Contribution} \end{array} \right)$$

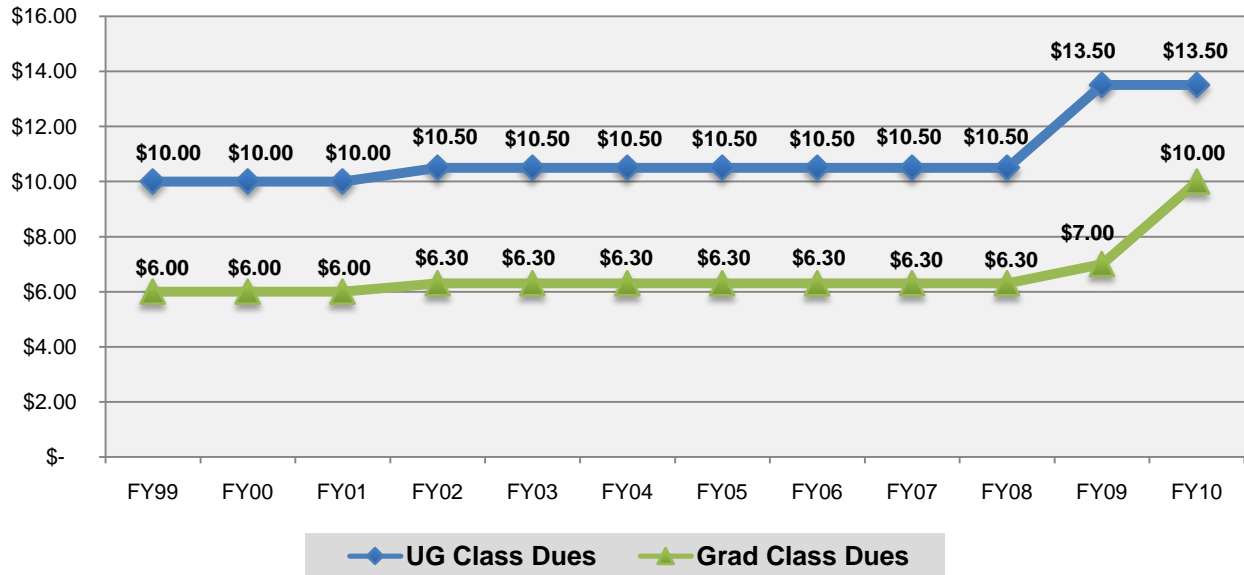
Page 21

Page 21

## HIGHLIGHTED SEGMENTS

### CLASS DUES

Past History of Class Dues (1998-2010)



Class Dues are charged to each student for their respective class year. There are four class councils (Freshman, Sophomore, Junior, and Senior) and the Graduate Council. The same class dues are charged to every undergraduate student, regardless of class year. These dues are generally charged to pay for activities that are planned and executed by each organization over the course of the student experience at RPI.

Recently, these councils have shown a much higher level of activity, and thus the fees began to increase in FY09. While the increases have, at times, been dramatic, they have resulted in an increased amount of funding for class parties, sponsorships, and other social gatherings. **The Class Dues for undergraduates and graduates will remain the same for FY11: \$13.50 for undergraduates, and \$10.00 for graduates.**

### Summer Fee and Special Populations

- **Fall & Spring Local Co-op Students:** Income from these students is included in the regular Activity Fee projections.
- **Summer Local Co-op Students:** Summer local co-op students do not pay a summer activity fee.
- **Continuing-Studies Students:** Income attributed to these students is included in the projections of Bookstore and other Business Operation sales.
- **Summer School Students (“Summer Fee”):** The allocation of the Summer Activity Fee is determined by reviewing the previous year and making an informed projection for the upcoming Fiscal Year’s summer session. For FY11 (Summer 2010), \$20,000 will be the budget amount of income to be raised in Activity Fees from summer school students, at a rate of \$11 per week. For FY11, the funds will be distributed based on projected enrollments of 80% (\$16,000) for undergraduate students and 20%

(\$4,000) for graduate students. During the summer, the Union building is still open and providing services despite the fact that there is a large decrease in undergraduate students on campus.

## EXPENSE ACTIVITIES BY ENROLLMENT SPLIT

Expense activities may provide income, but are chiefly characterized by the fact that they incur more expenses than the income they bring in. These particular expenses are allocated to undergraduates and graduates simply by applying the UG/GR split (84.7 % UG / 15.3 % GR) that is presented on **Page 8**.

The Union Budget includes several general service items that are essential to the efficient management of the Union as a whole. These expenses are assessed to the Activity Fee using the UG/GR Split, as they are for the benefit of the student body as a whole. The Union Administration Office and Services budget, Union Facilities budgets, and the Legal Services budget make up the general infrastructure that makes it possible for all students to gain access to the many opportunities of the Union. This includes everything from making photocopies to accessing legal advice and assistance from Union-endorsed practitioners.

### SERVICE CLUBS

---

Service Clubs are those classified as service-oriented, student government, or performing arts. These clubs are covered in **Appendix C**. Whereas General Clubs are funded based on actual numbers of students who *participate* in them as members, Service Clubs are funded by the *enrollment split*.

These organizations provide numerous services to the RPI community, including television filming and production (RPI TV), ambulance and EMT (RPI Ambulance), and a general student newspaper (*The Polytechnic*). On the performing arts side, there are music (symphonic, jazz, orchestral), theater, a *capella*, and improv comedy groups. The Union Performing Arts Committee (UPAC) groups also provide sound and light services, and program comedy and concert events.

The Service Clubs subsidy for FY09 was \$434,062.91; thus **funding increased by 3.40% from FY10 to FY11**.

See Appendix C for service club information. In FY11, there are **35 service clubs**.

1022 UG Participants  
60 GR Participants

\$380,154.57 UG  
\$68,670.19 GR  
=  
\$448,824.76

### ICA MEN'S ICE HOCKEY

---

Since Men's Ice Hockey is considered a spectator sport, it is similar to the Union's Service Clubs. Accordingly, overhead costs associated with Men's Ice Hockey are distributed using the UG / GR split, while the overhead cost of other ICA sports are distributed based on undergrad and grad participation in them.

The Men's Ice Hockey expense distribution does include part of the ICA General budget, which contains non-salary operating costs, sports information, and training room expenditures. This is formally

28 athletes x \$376.19  
overhead cost / athlete  
= \$10,533 total overhead  
+  
\$402,983 operating  
budget

known as the General Overhead and totals \$231,355 for FY11.

The distribution of the General Overhead Budget of \$231,355 to the ICA sports is based on a total of 615 travel team athletes across all sports, making the cost per ICA athlete \$376.19. There are 28 ICA athletes in Men's Ice Hockey, and thus **the overhead budget is \$10,533.**

This overhead expense is added to the net expense of the Men's Ice Hockey Operating Budget (\$402,983) to get a total cost of \$413,516, which is then split by the UG / GR ratio.

Total expenses of  
\$413,516  
UG: \$350,248.46 (84.7%)  
GR: \$63,268.03 (15.3%)

#### INTRAMURAL ATHLETICS (NO ICE HOCKEY)

---

This expense contribution is based on the UG / GR split and includes all administrative expenses for every intramural sport offered at RPI besides Intramural Ice Hockey. Intramurals are only within the scope of the Institute and do not involve schools outside of RPI. Many Union organizations, fraternities, sororities, and other organizations organize intramural teams.

### EXPENSE ACTIVITIES BY PARTICIPATION

These particular expenses are accrued to undergraduates and graduates based on the participation of their respective student communities in each set of activities. For example, if there are two graduate students participating in Intercollegiate soccer, the total expense accrued to graduate students will be multiplied by a factor of two.

#### INTERCOLLEGIATE ATHLETICS (ICA) CONTRIBUTION

---

Except for Men's Ice Hockey, the distribution of costs related to Intercollegiate Athletics is differentiated between the varying levels of participation in each activity.

The Men's Ice Hockey expense distribution does include part of the ICA General budget, which contains non-salary operating costs, sports information, and training room expenditures. The distribution of the General Overhead Budget of \$231,355 to the ICA sports is based on a total of 615 travel team athletes across all sports, making the cost per ICA athlete \$336.03.

**Newly added to the ICA Budget is Strength & Conditioning, which will receive \$11,432.10 for FY11.** This is a new program enabled by added conditioning facilities in the new East Campus Athletic Village (ECAV) facility. While the equipment is specifically suitable to our athletes, the strength conditioning facilities will also be available to interested students who are not funded athletes.

\$1,600,035.99 Total  
Request  
See Appendix D for ICA  
requests and past history.

General Overhead:  
\$231,355  
(\$376.19 / athlete)  
615 total athletes  
0 GR athletes

	# Athletes	Overhead Budget
Men's Ice Hockey	28	\$10,533
Other ICA Sports	587	220,823
<b>TOTAL</b>	<b>615</b>	<b>\$231,355</b>

ICA General Overhead (\$376.19 Cost / Athlete)

For Spring 2011, the academic calendar will start one week later than in past years, and thus recess feeding affects several team budgets for FY11. These teams must be budgeted for an additional week of pre-semester food accommodations due to the fact that dining halls will be closed during that week in January 2011.

For each sport not having graduate student athletes, the overhead cost is added to the general budget for that sport and then distributed in its entirety as an undergraduate expense. **There are no graduate ICA athletes this year.**

#### INTRAMURAL ICE HOCKEY CONTRIBUTION

Intramural Ice Hockey has Graduate participants estimated at 3%. The total expense contribution for Intramural Ice Hockey in the Intramural budget is as follows:

Administrative Expenses	\$3,292.50
15% of Assistant Coordinator's Salary + Benefits	3,872.32
¼ of Student Coordinator Web Design/Recreation Supervisor Allocation	0.00
<b>TOTAL</b>	<b>\$7,164.82</b>

Total expenses of  
\$7,164.82  
UG: \$6,949.88 (97%)  
GR: \$214.40 (3%)

The two positions included in these expenses are paid for in part by this contribution because they partially apply to the administration and promotion of Intramural Ice Hockey at RPI.

## GENERAL CLUBS CONTRIBUTION

---

General Clubs are those not classified as service-oriented, student government, or performing arts. **Appendix B** provides additional information about the distinction between these two groups. General Clubs are funded based on actual numbers of students who *participate* in them as members.

The General Clubs subsidy is developed by dividing the total subsidy approved for the organization by the total number of student members (graduate and undergraduate). This “per-person” cost<sup>1</sup> is then multiplied by the numbers of undergraduate and graduate students in the organization. See **Appendix B** for the number of members and applied costs.

The cost per member in “sports” clubs is generally high due to the cost of the coaching staff, equipment and space rental; per-person dues are required of members to help make up the cost. Generally the expense to participate in a sports club is far more than the Union’s per-person subsidy.

The General Clubs subsidy for FY10 was \$180,500.93; thus **funding increased by 14.7% from FY10 to FY11.**

See Appendix B for General Club information. There are 75 General Clubs for FY11.

3391 UG Participants  
435 GR Participants

\$183,373.79 UG  
\$23,594.37 GR  
=  
\$206,968.16

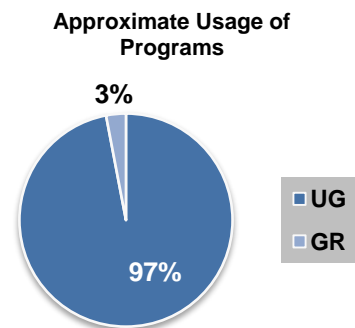
## ARCHER CENTER CONTRIBUTION

---

The Archer Center for Student Leadership Development provides extracurricular programming for student leadership, team-building and dynamics, and enrichment. The Archer Center was re-categorized as a General activity for the 2001/2002 year and continues this classification for 2010/2011.

Archer Center staff members also administer academic courses, such as Professional Development (PD) I and III. Funding provided through the Union does not cover salaries for Archer Center staff.

A review of attendees reveals that the AC SLD’s extracurricular programming is used by approximately 97% by undergraduates and 3% by graduate students.



<sup>1</sup> The per-person cost is a method of attributing expenses and does not imply that a club only creates programs for its members.

## INCOME ACTIVITIES BY ENROLLMENT SPLIT

Income activities may incur expenses, but are chiefly characterized by the fact that they bring in more income than they require to be spent. An exception is the Games Area, which is classified as a service function of the Union despite returning a “negative” income on the Budget Sheet. These particular expenses are distributed to offset undergraduate and graduate expenses simply by applying the UG/GR split (84.7 % UG / 15.3 % GR) that is presented on **Page 8**.

### GAMES AREA

The Games Area includes pool tables, arcade and video games, and ping-pong. Years ago, a decision was made to fund the Games Area as a service function. The Games Area is no longer expected to return a net profit to the Union. Observation shows that the use of the Games Area is primarily undergraduate and should be distributed based on the UG / GR split (84.7 % UG / 15.3 % GR). The Games Area has a projected net loss of \$6,966, which will be split according to the ratio above.

Net LOSS of \$6,966  
UG: \$5,900.20  
GR: \$1,065.80

### AUXILIARY BUSINESS AND VENDORS

The Union building also includes a variety of businesses that are not operated by Union employees. This budget accounts for the Campus Unisex barber shop, Ben & Jerry’s Ice Cream, and HSBC. The \$76,014 projected in income from this year results from rental income and sales commissions. This income is distributed by the UG / GR split (84.7 % UG / 15.3 % GR), which is \$64,383.86 for undergraduates and \$11,630.14 for graduate students.

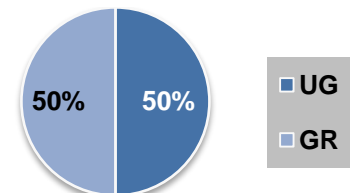
Net PROFIT of \$76,014  
UG: \$64,383.86  
GR: \$11,630.14

## INCOME ACTIVITIES BY PARTICIPATION

These income activities are split between undergraduate and graduate expense offsets based on estimated participation of each community in them.

### CLUBHOUSE PUB CONTRIBUTION

The Clubhouse Pub serves beverages and snacks, and operates programs throughout the academic year. Observation shows that the number of undergraduate student participants is approximately equal to the number of graduate student participants. The net income for the Clubhouse Pub is distributed with the ratio of 50% undergraduate students and 50% graduate students. However, the Clubhouse Pub budget is projecting a **\$0 subsidy for FY11**, so there will be no split.



## BOOKSTORE CONTRIBUTION

The Union Bookstore contributes approximately 73% of the Union's total income. **For FY11, the Bookstore contribution is projected to be \$475,527.**

The Bookstore budget for 2010-11 calls for a decrease in textbook sales, because of several factors such as increased sharing of books and higher sales of used texts. Projected *new book sales* totaling **\$3,015,773** are based on the number of student credit hours:

	Undergraduate	Graduate
Fall Credit Hours	90,802	13,084
Spring Credit Hours	83,632	12,973
Summer Credit Hours	2,519	237
Special Credit Hours	1,927	362
Credit Hour Total = 205,536	178,880	26,656
Credit Hour Percentage Attributed to Students	87%	13%
Book Sales x Credit Hour Percentage	\$2,623,723	\$392,050

New Textbook Sales Based on Undergraduate and Graduate Credit Hours

The store is not reliant on the sales of texts as a profit center. Therefore, the decrease in text sales effect on the contribution of the store to the Rensselaer Union is mitigated. Projected other sales, totaling **\$1,227,645**, will be allocated using the UG/GR split (84.7 % UG / 15.3 % GR).

These profits must be combined for each respective group and used to calculate the percentage of total Bookstore sales attributed to undergraduates and graduates. Finally, these percentages are used in the distribution of net income of Bookstore income.

The Bookstore has continued to take steps to allow it to contribute increased funds to the Rensselaer Union to offset the net budgetary expenses. These measures include:

- Duties are reassigned to existing staff members when retirements occur.
- Strict review of all discretionary spending (travel, equipment)
- Negotiations for decreased shipping expenses by aligning with other stores in group talks with shipping companies.
- Continued exploration of new lines of merchandise and new vendors that allow for growth in sales of non-textbook merchandise.

These actions have decreased net expenses, resulting in a net income increase.

New book sales of  
**\$3,015,773**

Attributed to UG:  
\$3,075,286 (86.4%)

Attributed to GR:  
\$484,073 (13.6%)

Other sales of  
**\$1,227,645**

Attributed to UG:  
\$1,039,815 (84.7%)

Attributed to GR:  
\$187,830 (15.3%)

Total sales of  
**\$4,243,418**

Attributed to UG:  
\$3,663,538 (86.3%)

Attributed to GR:  
\$579,880 (13.7%)

Projected Net Income:  
**\$475,527**

Attributed to UG:  
\$410,379.80 (86.3%)

Attributed to GR:  
\$65,147.20 (13.7%)



## APPENDICES

- A. All Club Subsidies (Fiscal Year 2011, 2010-2011)
- B. FY11 General Club Subsidies
- C. FY11 Service Club Subsidies
- D. FY11 Intercollegiate Athletics (ICA) Budgets

## APPENDIX A. All Club Subsidies

Club Name	Approved Expense				Approved Income				Approved Subsidy			
	FY09	FY10	FY11	Chg	FY09	FY10	FY11	Chg	FY09	FY10	FY11	Chg
Aeronautical Federation	18,012.50	20,764.00	19,742.50	-4.92%	13,655.00	15,820.00	15,860.00	0.25%	4,357.50	4,944.00	3,882.50	-21.47%
ACSA	5,433.00	6,785.00	7,782.00	14.69%	400.00	1,520.00	1,400.00	-7.89%	5,033.00	5,265.00	6,382.00	21.22%
Aikido	5,658.50	5,658.50	5,658.50	0.00%	2,962.50	3,327.50	3,152.50	-5.26%	2,696.00	2,331.00	2,506.00	7.51%
Alianza Latina	9,463.00	8,720.00	8,275.00	-5.10%	1,445.00	1,145.00	1,740.00	51.97%	8,018.00	7,575.00	6,535.00	-13.73%
Archery Club	1,355.00	1,886.25	2,547.75	35.07%	742.50	1,642.50	2,279.50	38.78%	612.50	243.75	268.25	10.05%
Astrophysical Society	1,084.10	441.10	562.10	27.43%	0.00	157.50	147.50	-6.35%	1,084.10	283.60	414.60	46.19%
Autoshop	8,445.00	2,987.00	3,168.90	6.09%	1,430.00	1,580.00	1,280.00	-18.99%	7,015.00	1,407.00	1,888.90	34.25%
Badminton	0.00	3,639.50	3,774.50	3.71%	0.00	2,848.00	3,028.00	6.32%	0.00	791.50	746.50	-5.69%
Ballroom Dance	16,435.00	26,991.40	31,715.90	17.50%	16,065.00	24,396.40	28,037.00	14.92%	370.00	2,595.00	3,678.90	41.77%
Big Brothers Big Sisters	0.00	250.00	700.00	180.00%	0.00	0.00	0.00	0.00%	0.00	250.00	700.00	180.00%
Big Red Freakout	10,800.00	13,900.00	15,825.00	13.85%	5,500.00	10,000.00	12,000.00	20.00%	5,300.00	3,900.00	3,825.00	-1.92%
Billiards Club	0.00	750.00	200.00	-73.33%	0.00	550.00	200.00	-63.64%	0.00	200.00	0.00	-100.00%
Black Students Alliance	14,964.00	10,465.00	11,731.50	12.10%	1,410.00	1,500.00	1,410.00	-6.00%	13,554.00	8,965.00	10,321.50	15.13%
Business Investments	0.00	297.50	305.00	2.52%	0.00	0.00	0.00	0.00%	0.00	297.50	305.00	2.52%
Campus Serenaders	413.00	408.00	578.00	41.67%	0.00	0.00	0.00	0.00%	413.00	408.00	578.00	41.67%
Capoeira	8,212.00	8,964.80	8,493.50	-5.26%	5,635.00	5,937.50	5,172.50	-12.88%	2,577.00	3,027.30	3,321.00	9.70%
Cheerleading	0.00	7,468.50	7,954.00	6.50%	0.00	1,889.00	2,470.00	30.76%	0.00	5,579.50	5,484.00	-1.71%
Chinese American Students Association	0.00	5,322.50	5,593.75	5.10%	0.00	4,250.00	4,845.00	14.00%	0.00	1,072.50	748.75	-30.19%
Chinese Students and Scholars Association	3,977.60	3,444.00	3,452.50	0.25%	800.00	800.00	800.00	0.00%	3,177.60	2,644.00	2,652.50	0.32%
Circle K	2,695.05	2,653.05	2,946.55	11.06%	120.00	120.00	1,150.00	858.33%	2,575.05	2,533.05	1,796.55	-29.08%
Club Ice Hockey	0.00	17,386.00	22,314.50	28.35%	0.00	14,160.00	18,750.00	32.42%	0.00	3,226.00	3,564.50	10.49%
Concert Choir	10,233.00	10,233.00	10,208.00	-0.24%	400.00	420.00	660.00	57.14%	9,833.00	9,813.00	9,548.00	-2.70%
Crew	43,315.00	46,376.40	49,872.00	7.54%	37,335.00	37,343.00	42,335.00	13.37%	5,980.00	9,033.40	7,537.00	-16.57%
Curling Club	0.00	1,847.80	7,242.00	291.93%	0.00	1,280.00	4,435.00	246.48%	0.00	567.80	2,807.00	394.36%
Cycling	3,715.00	2,895.90	3,725.00	28.63%	3,365.00	2,625.00	3,260.00	24.19%	350.00	270.90	465.00	71.65%
Dance Club	16,447.50	16,311.00	16,725.76	2.54%	7,600.00	7,352.00	7,170.00	-2.48%	8,847.50	8,959.00	9,555.76	6.66%
Dance Dance Revolution	0.00	619.50	453.00	-26.88%	0.00	357.50	200.00	-44.06%	0.00	262.00	253.00	-3.44%
Ecologic	2,412.00	2,008.50	2,177.50	8.41%	10.00	0.00	60.00	0.00%	2,402.00	2,008.50	2,117.50	5.43%
Electronics	1,433.40	1,228.00	1,386.00	12.87%	600.00	750.00	680.00	-9.33%	833.40	478.00	706.00	47.70%
Engineers for a Sustainable World	0.00	631.45	1,340.00	112.21%	0.00	0.00	100.00	0.00%	0.00	631.45	1,240.00	96.37%
Equestrian Club	0.00	20,647.00	25,051.00	21.33%	0.00	16,009.00	20,422.00	27.57%	0.00	4,638.00	4,629.00	-0.19%
Executive Board	6,771.71	6,801.71	7,257.71	6.70%	0.00	0.00	0.00	0.00%	6,771.71	6,801.71	7,257.71	6.70%
Experimental Error	0.00	318.00	340.00	6.92%	0.00	0.00	0.00	0.00%	0.00	318.00	340.00	6.92%

Club Name	Approved Expense				Approved Income				Approved Subsidy			
	FY09	FY10	FY11	Chg	FY09	FY10	FY11	Chg	FY09	FY10	FY11	Chg
Fencing	0.00	14,223.00	16,071.95	13.00%	0.00	11,450.00	13,700.00	19.65%	0.00	2,773.00	2,371.95	-14.46%
Fitness Club	0.00	1,064.00	917.50	-13.77%	0.00	1,061.00	651.00	-38.64%	0.00	3.00	266.50	8783.33%
Game Development Club	945.00	2,132.50	1,232.50	-42.20%	0.00	500.00	0.00	-100.00%	945.00	1,632.50	1,232.50	-24.50%
Gaming Club	429.00	609.60	659.00	8.10%	225.00	255.00	250.00	-1.96%	204.00	354.60	409.00	15.34%
GM Week	47,487.00	47,803.00	42,880.00	-10.30%	3,200.00	3,500.00	4,000.00	14.29%	44,287.00	44,303.00	38,880.00	-12.24%
Habitat for Humanity	5,195.00	5,032.00	4,846.00	-3.70%	1,980.00	1,980.00	2,180.00	10.10%	3,215.00	3,052.00	2,666.00	-12.65%
Holocaust Remembrance Committee	0.00	482.00	92.00	-80.91%	0.00	0.00	0.00	0.00%	0.00	482.00	92.00	-80.91%
Indian Students Association	6,022.50	4,677.00	4,371.40	-6.53%	5,200.00	4,006.00	3,910.00	-2.40%	822.50	671.00	461.40	-31.24%
Isshriyuu Karate	7,503.00	7,528.00	8,243.96	9.51%	3,398.00	4,111.00	4,724.00	14.91%	4,105.00	3,417.00	3,519.96	3.01%
Japanese Cultural Association	899.00	764.50	750.10	-1.88%	0.00	0.00	0.00	0.00%	899.00	764.50	750.10	-1.88%
Jazz Ensemble	6,933.20	12,925.40	13,367.40	3.42%	0.00	0.00	300.00	0.00%	6,933.20	12,925.40	13,067.40	1.10%
Judicial Board	1,689.71	1,689.71	1,691.91	0.13%	0.00	0.00	0.00	0.00%	1,689.71	1,689.71	1,691.91	0.13%
Judo Club	10,580.92	8,334.00	9,789.00	17.46%	7,938.00	5,821.00	8,146.00	39.94%	2,642.92	2,513.00	1,643.00	-34.62%
Kendo	1,815.96	2,110.71	2,900.82	37.43%	1,526.25	1,941.25	2,623.50	35.14%	289.71	169.46	277.32	63.65%
Married Students Organization	1,455.00	1,455.00	1,370.00	-5.84%	0.00	0.00	0.00	0.00%	1,455.00	1,455.00	1,370.00	-5.84%
Mens Lacrosse Club	0.00	3,215.00	3,545.00	10.26%	0.00	2,700.00	2,896.00	7.26%	0.00	515.00	649.00	26.02%
Model Railroad	4,843.87	4,745.27	4,550.27	-4.11%	2,690.00	2,730.00	2,030.00	-25.64%	2,153.87	2,015.27	2,520.27	25.06%
Olympic Tae Kwon Do	0.00	4,046.00	4,051.00	0.12%	0.00	4,025.00	3,639.00	-9.59%	0.00	21.00	412.00	1861.90%
Outing Club	21,760.50	22,032.10	22,854.62	3.73%	18,565.00	18,745.00	19,132.12	2.07%	3,195.50	3,287.10	3,722.50	13.25%
Paintball	21,453.00	21,321.00	21,420.60	0.47%	17,904.00	17,465.00	17,345.00	-0.69%	3,549.00	3,856.00	4,075.60	5.70%
Pakistan Students Association (PAKSA)	1,994.00	1,547.00	2,185.00	41.24%	1,025.00	400.00	1,035.00	158.75%	969.00	1,147.00	1,150.00	0.26%
Pep Band	14,140.00	14,135.00	13,724.00	-2.91%	1,810.00	1,150.00	1,510.00	31.30%	12,330.00	12,985.00	12,214.00	-5.94%
Percussion Ensemble	6,112.00	6,184.00	6,179.00	-0.08%	0.00	0.00	0.00	0.00%	6,112.00	6,184.00	6,179.00	-0.08%
Performing Arts Committee	0.00	9,297.00	9,518.00	2.38%	0.00	1,360.00	1,400.00	2.94%	0.00	7,937.00	8,118.00	2.28%
Philippine American League	0.00	2,010.00	2,000.00	-0.50%	0.00	1,680.00	1,750.00	4.17%	0.00	330.00	250.00	-24.24%
Photo Club	4,347.00	3,269.50	3,199.50	-2.14%	4,154.00	3,216.00	2,918.50	-9.25%	193.00	53.50	281.00	425.23%
Players	31,167.50	30,572.50	31,636.50	3.48%	15,939.50	14,964.50	14,420.00	-3.64%	15,228.00	15,608.00	17,216.50	10.31%
Polytechnic	75,266.00	85,331.00	85,331.00	0.00%	75,266.00	85,331.00	85,331.00	0.00%	0.00	0.00	0.00	0.00%
Pride Alliance	0.00	2,495.00	2,481.00	-0.56%	0.00	500.00	625.00	25.00%	0.00	1,995.00	1,856.00	-6.97%
Publicity Committee	3,350.00	3,250.00	4,025.00	23.85%	0.00	0.00	0.00	0.00%	3,350.00	3,250.00	4,025.00	23.85%
Quiz Bowl Club	0.00	2,172.50	1,345.00	-38.09%	0.00	1,608.40	908.40	-43.52%	0.00	564.10	436.60	-22.60%
Racquetball	11,530.00	12,004.00	12,514.00	4.25%	8,280.00	8,508.00	9,045.00	6.31%	3,250.00	3,496.00	3,469.00	-0.77%
Radio Control Aircraft Club	0.00	1,405.00	620.00	-55.87%	0.00	360.00	60.00	-83.33%	0.00	1,045.00	560.00	-46.41%
Red Army	6,800.00	2,009.00	3,109.00	54.75%	1,800.00	100.00	750.00	650.00%	5,000.00	1,909.00	2,359.00	23.57%

Club Name	Approved Expense				Approved Income				Approved Subsidy			
	FY09	FY10	FY11	Chg	FY09	FY10	FY11	Chg	FY09	FY10	FY11	Chg
Rensselaer Bengali Community	1,726.50	715.00	1,125.00	57.34%	535.00	0.00	780.00	0.00%	1,191.50	715.00	345.00	-51.75%
Rensselyrics	0.00	10,280.00	9,529.20	-7.30%	0.00	1,560.00	1,460.00	-6.41%	0.00	8,720.00	8,069.20	-7.46%
Rifle Club	0.00	9,916.00	8,241.00	-16.89%	0.00	8,490.00	6,840.00	-19.43%	0.00	1,426.00	1,401.00	-1.75%
RMA (Rensselaer Music Association)	12,576.00	2,937.00	3,923.50	33.59%	560.00	0.00	0.00	0.00%	12,016.00	2,937.00	3,923.50	33.59%
RPI Ambulance	0.00	12,396.75	14,946.86	20.57%	0.00	1,990.00	100.00	-94.97%	0.00	10,406.75	14,846.86	42.67%
RPISEC	0.00	0.00	1,420.00	N/A	0.00	0.00	770.00	N/A	0.00	0.00	650.00	N/A
RPI TV	10,115.25	9,859.17	10,781.00	9.35%	100.00	200.00	500.00	150.00%	10,015.25	9,659.17	10,281.00	6.44%
Rugby	27,376.00	30,675.00	32,392.50	5.60%	19,422.00	22,992.00	24,910.00	8.34%	7,954.00	7,683.00	7,482.50	-2.61%
Sailing	6,812.00	7,438.50	6,853.30	-7.87%	3,735.00	4,470.00	3,820.00	-14.54%	3,077.00	2,968.50	3,033.30	2.18%
Science Fiction Society	0.00	11,130.00	11,930.00	7.19%	0.00	10,890.00	11,320.00	3.95%	0.00	240.00	610.00	154.17%
SCUBA	3,687.00	3,937.00	7,370.50	87.21%	2,170.00	2,160.00	4,431.00	105.14%	1,517.00	1,777.00	2,939.50	65.42%
Sheer Idiocy	828.01	729.01	559.02	-23.32%	55.00	60.00	0.00	-100.00%	773.01	669.01	559.02	-16.44%
Ski and Snowboard Club	48,979.65	41,425.00	36,314.00	-12.34%	48,895.00	41,408.00	35,840.00	-13.45%	84.65	17.00	474.00	2688.24%
Ski Team	0.00	22,403.16	25,848.00	15.38%	0.00	14,140.00	17,460.00	23.48%	0.00	8,263.16	8,388.00	1.51%
Sports Car Association	1,984.95	649.00	694.50	7.01%	770.00	560.00	590.00	5.36%	1,214.95	89.00	104.50	17.42%
Statler & Waldorf	14,000.90	17,970.86	18,721.00	4.17%	0.00	0.00	0.00	0.00%	14,000.90	17,970.86	18,721.00	4.17%
Student Senate	7,989.96	9,540.76	9,463.56	-0.81%	0.00	0.00	0.00	0.00%	7,989.96	9,540.76	9,463.56	-0.81%
Swim Club	665.00	297.00	688.00	131.65%	360.00	150.00	420.00	180.00%	305.00	147.00	268.00	82.31%
Symphonic Band	6,190.50	5,209.00	5,489.50	5.38%	0.00	0.00	0.00	0.00%	6,190.50	5,209.00	5,489.50	5.38%
Symphony Orchestra	0.00	1,243.00	801.90	-35.49%	0.00	0.00	0.00	0.00%	0.00	1,243.00	801.90	-35.49%
Table Tennis	0.00	4,965.00	4,540.00	-8.56%	0.00	4,734.00	4,384.00	-7.39%	0.00	231.00	156.00	-32.47%
Tae Kwon Do	9,336.50	9,336.50	9,336.50	0.00%	5,262.00	5,787.50	6,137.50	6.05%	4,074.50	3,549.00	3,199.00	-9.86%
Taiwanese Students Association	0.00	565.00	463.00	-18.05%	0.00	0.00	0.00	0.00%	0.00	565.00	463.00	-18.05%
Tennis Club	1,017.00	1,017.00	758.00	-25.47%	864.00	882.00	615.00	-30.27%	153.00	135.00	143.00	5.93%
TerraCafe	0.00	1,613.00	1,592.00	-1.30%	0.00	0.00	0.00	0.00%	0.00	1,613.00	1,592.00	-1.30%
Transit Yearbook	41,341.50	43,000.60	42,233.00	-1.79%	26,875.00	26,400.00	19,000.00	-28.03%	14,466.50	16,600.60	23,233.00	39.95%
Ultimate Frisbee	13,224.50	17,080.70	28,546.90	67.13%	11,569.15	15,520.00	23,988.00	54.56%	1,655.35	1,560.70	4,558.90	192.11%
Undergraduate Council	490.00	396.00	3,342.75	744.13%	0.00	0.00	1,500.00	0.00%	490.00	396.00	1,842.75	365.34%
Union Speakers Forum	0.00	42,825.00	37,704.00	-11.96%	0.00	0.00	0.00	0.00%	0.00	42,825.00	37,704.00	-11.96%
UPAC Cinema	0.00	60,585.00	59,925.00	-1.09%	0.00	28,025.00	28,225.00	0.71%	0.00	32,560.00	31,700.00	-2.64%
UPAC Comedy	22,427.00	22,368.00	25,910.50	15.84%	0.00	0.00	256.56	0.00%	22,427.00	22,368.00	25,653.94	14.69%
UPAC Concerts	104,298.00	48,178.00	49,858.00	3.49%	60,000.00	0.00	0.00	0.00%	44,298.00	48,178.00	49,858.00	3.49%
UPAC General	7,431.64	6,499.00	5,305.00	-18.37%	0.00	0.00	0.00	0.00%	7,431.64	6,499.00	5,305.00	-18.37%
UPAC Lights	18,377.00	14,190.00	14,066.00	-0.87%	5,500.00	5,500.00	5,500.00	0.00%	12,877.00	8,690.00	8,566.00	-1.43%
UPAC Mothers	26,276.00	25,651.00	16,382.00	-36.14%	100.00	0.00	0.00	0.00%	26,176.00	25,651.00	16,382.00	-36.14%
UPAC Sound	19,010.00	17,561.00	24,220.00	37.92%	8,800.00	8,800.00	8,800.00	0.00%	10,210.00	8,761.00	15,420.00	76.01%

Club Name	Approved Expense				Approved Income				Approved Subsidy			
	FY09	FY10	FY11	Chg	FY09	FY10	FY11	Chg	FY09	FY10	FY11	Chg
UPAC Summer	6,309.00	5,440.00	20,050.00	<b>268.57%</b>	855.00	855.00	525.00	<b>-38.60%</b>	5,454.00	4,585.00	19,525.00	<b>325.85%</b>
Volleyball	17,582.50	13,047.50	13,457.50	<b>3.14%</b>	11,168.00	7,976.00	9,089.00	<b>13.95%</b>	6,414.50	5,071.50	4,368.50	<b>-13.86%</b>
W2SZ HAM Radio	6,796.00	4,828.49	5,943.20	<b>23.09%</b>	720.00	660.00	465.00	<b>-29.55%</b>	6,076.00	4,168.49	5,478.20	<b>31.42%</b>
Water Polo	11,879.50	14,735.80	21,832.50	<b>48.16%</b>	6,832.50	9,765.00	12,568.50	<b>28.71%</b>	5,047.00	4,970.80	9,264.00	<b>86.37%</b>
Weight Lifting	0.00	0.00	1,050.00	<b>N/A</b>	0.00	0.00	1,050.00	<b>N/A</b>	0.00	0.00	0.00	<b>N/A</b>
Wrestling	12,910.50	15,803.00	18,979.00	<b>20.10%</b>	6,625.00	9,272.00	11,396.00	<b>22.91%</b>	6,285.50	6,531.00	7,583.00	<b>16.11%</b>
WRPI	42,501.50	36,668.35	42,198.36	<b>15.08%</b>	0.00	1,400.00	500.00	<b>-64.29%</b>	42,501.50	35,268.35	41,698.36	<b>18.23%</b>
<b>TOTALS</b>	<b>989,134.38</b>	<b>1,206,076.80</b>	<b>1,287,357.00</b>	<b>6.74%</b>	<b>492,148.40</b>	<b>591,894.55</b>	<b>631,564.08</b>	<b>6.70%</b>	<b>496,985.98</b>	<b>614,182.25</b>	<b>655,792.92</b>	<b>6.77%</b>



## APPENDIX B. General Clubs

Club	Subsidy	UG	GR	Subsidy Per Member	Subsidy for UG	Subsidy for GR
Aeronautical Federation (RAF)	\$3,882.50	37	2	\$99.55	\$3,683.40	\$199.10
African & Caribbean Students Association (ACSA)	\$6,382.00	49	3	\$122.73	\$6,013.81	\$368.19
Aikido	\$2,506.00	13	2	\$167.07	\$2,171.87	\$334.13
Alianza Latina	\$6,535.00	79	1	\$81.69	\$6,453.31	\$81.69
Archery Club	\$268.25	33	1	\$7.89	\$260.36	\$7.89
Astrophysical Society	\$414.60	24	3	\$15.36	\$368.53	\$46.07
Badminton	\$746.50	22	20	\$17.77	\$391.02	\$355.48
Ballroom Dance	\$3,678.90	109	8	\$31.44	\$3,427.35	\$251.55
Big Brothers Big Sisters	\$700.00	20	0	\$35.00	\$700.00	\$0.00
Billiards Club	\$0.00	55	1	\$0.00	\$0.00	\$0.00
Black Students Alliance	\$10,321.50	120	4	\$83.24	\$9,988.55	\$332.95
Business Investments	\$305.00	69	8	\$3.96	\$273.31	\$31.69
Capoeira	\$3,321.00	26	0	\$127.73	\$3,321.00	\$0.00
Cheerleading	\$5,484.00	21	0	\$261.14	\$5,484.00	\$0.00
Chinese American Students Association	\$748.75	99	4	\$7.27	\$719.67	\$29.08
Chinese Students and Scholars Association	\$2,652.50	12	149	\$16.48	\$197.70	\$2,454.80
Circle K	\$1,796.55	31	0	\$57.95	\$1,796.55	\$0.00
Club Ice Hockey	\$3,564.50	24	0	\$148.52	\$3,564.50	\$0.00
Crew	\$7,537.00	62	0	\$121.56	\$7,537.00	\$0.00
Curling Club	\$2,807.00	24	0	\$116.96	\$2,807.00	\$0.00
Cycling	\$465.00	22	1	\$20.22	\$444.78	\$20.22
Dance Club	\$9,555.76	50	3	\$180.30	\$9,014.87	\$540.89
Dance Dance Revolution	\$253.00	19	0	\$13.32	\$253.00	\$0.00
Ecologic	\$2,117.50	45	4	\$43.21	\$1,944.64	\$172.86
Electronics	\$706.00	89	2	\$7.76	\$690.48	\$15.52
Engineers for a Sustainable World	\$1,240.00	37	3	\$31.00	\$1,147.00	\$93.00
Equestrian Club	\$4,629.00	30	0	\$154.30	\$4,629.00	\$0.00
Fencing	\$2,371.95	49	3	\$45.61	\$2,235.11	\$136.84
Fitness Club	\$266.50	18	2	\$13.33	\$239.85	\$26.65
Game Development Club	\$1,232.50	176	5	\$6.81	\$1,198.45	\$34.05
Gaming Club	\$409.00	25	2	\$15.15	\$378.70	\$30.30
Habitat for Humanity	\$2,666.00	68	1	\$38.64	\$2,627.36	\$38.64
Holocaust Remembrance Committee	\$92.00	3	0	\$30.67	\$92.00	\$0.00
Indian Students Association	\$461.40	155	22	\$2.61	\$404.05	\$57.35
Isshrinyu Karate	\$3,519.96	21	3	\$146.67	\$3,079.96	\$440.00
Japanese Cultural Association	\$750.10	70	3	\$10.28	\$719.27	\$30.83
Judo Club	\$1,643.00	24	2	\$63.19	\$1,516.62	\$126.38
Kendo	\$277.32	20	1	\$13.21	\$264.11	\$13.21
Married Students Organization	\$1,370.00	5	50	\$24.91	\$124.55	\$1,245.45
Mens Lacrosse Club	\$649.00	55	1	\$11.59	\$637.41	\$11.59
Model Railroad	\$2,520.27	11	3	\$180.02	\$1,980.21	\$540.06
Olympic Tae Kwon Do	\$412.00	22	1	\$17.91	\$394.09	\$17.91
Outing Club	\$3,722.50	154	18	\$21.64	\$3,332.94	\$389.56
Paintball	\$4,075.60	34	0	\$119.87	\$4,075.60	\$0.00
Pakistan Students Association (PAKSA)	\$1,150.00	130	9	\$8.27	\$1,075.54	\$74.46
Philippine American League	\$250.00	50	4	\$4.63	\$231.48	\$18.52
Photo Club	\$281.00	34	4	\$7.39	\$251.42	\$29.58
Pride Alliance	\$1,856.00	5	0	\$371.20	\$1,856.00	\$0.00

Club	Subsidy	UG	GR	Subsidy Per Member	Subsidy for UG	Subsidy for GR
Quiz Bowl Club	\$436.60	12	0	\$36.38	\$436.60	\$0.00
Racquetball	\$3,469.00	17	1	\$192.72	\$3,276.28	\$192.72
Radio Contol Aircraft Club	\$560.00	9	1	\$56.00	\$504.00	\$56.00
Rensselaer Bengali Community	\$345.00	93	13	\$3.25	\$302.69	\$42.31
Rifle Club	\$1,401.00	37	2	\$35.92	\$1,329.15	\$71.85
RMA (Rensselaer Music Association)	\$3,923.50	24	1	\$156.94	\$3,766.56	\$156.94
RPISEC	\$650.00	68	2	\$9.29	\$631.43	\$18.57
Rugby	\$7,482.50	63	1	\$116.91	\$7,365.59	\$116.91
Sailing	\$3,033.30	35	4	\$77.78	\$2,722.19	\$311.11
Science Fiction Society	\$610.00	54	1	\$11.09	\$598.91	\$11.09
SCUBA	\$2,939.50	11	2	\$226.12	\$2,487.27	\$452.23
Ski and Snowboard Club	\$474.00	202	22	\$2.12	\$427.45	\$46.55
Ski Team	\$8,388.00	42	0	\$199.71	\$8,388.00	\$0.00
Sports Car Association	\$104.50	7	0	\$14.93	\$104.50	\$0.00
Swim Club	\$268.00	20	6	\$10.31	\$206.15	\$61.85
Table Tennis	\$156.00	59	5	\$2.44	\$143.81	\$12.19
Tae Kwon Do	\$3,199.00	11	1	\$266.58	\$2,932.42	\$266.58
Taiwanese Students Association	\$463.00	62	3	\$7.12	\$441.63	\$21.37
Tennis Club	\$143.00	18	0	\$7.94	\$143.00	\$0.00
Transit Yearbook	\$23,233.00	8	1	\$2,581.44	\$20,651.56	\$2,581.44
Ultimate Frisbee	\$4,558.90	50	4	\$84.42	\$4,221.20	\$337.70
Undergraduate Council	\$1,842.75	9	0	\$204.75	\$1,842.75	\$0.00
Volleyball	\$4,368.50	32	1	\$132.38	\$4,236.12	\$132.38
W2SZ HAM Radio	\$5,478.20	13	1	\$391.30	\$5,086.90	\$391.30
Water Polo	\$9,264.00	29	6	\$264.69	\$7,675.89	\$1,588.11
Weight Lifting	\$0.00	40	3	\$0.00	\$0.00	\$0.00
Wrestling	\$7,583.00	16	1	\$446.06	\$7,136.94	\$446.06
<b>TOTALS</b>	<b>\$206,968.16</b>	<b>3391</b>	<b>435</b>		<b>\$191,056.41</b>	<b>\$15,911.75</b>



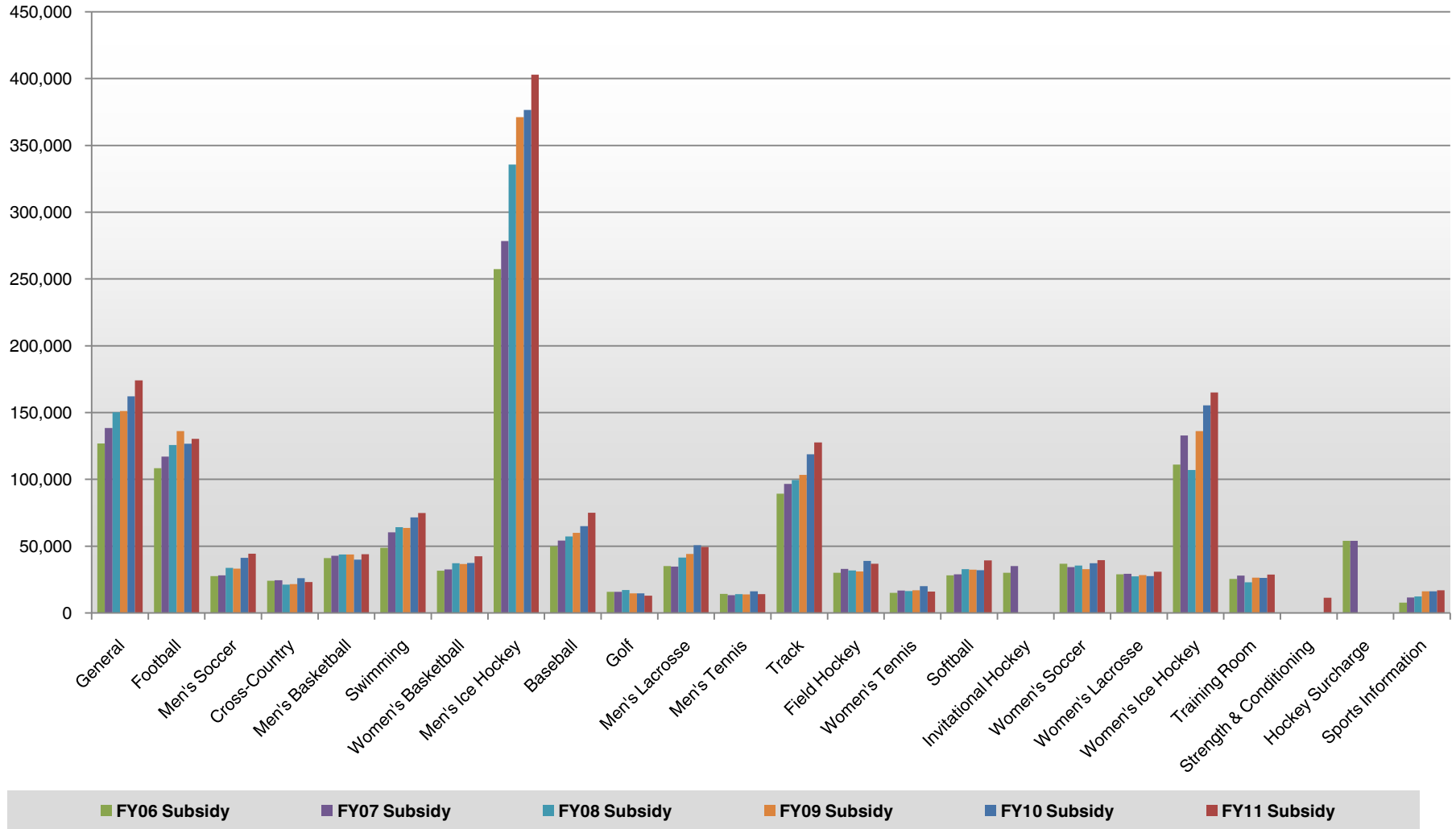
## APPENDIX C. Summary of Service Clubs

Club	Subsidy	UG	GR	Subsidy Per Member	Subsidy for UG	Subsidy for GR
Autoshop	\$1,888.90	22	1	\$82.13	\$1,806.77	\$82.13
Big Red Freakout	\$3,825.00	0	0	\$0.00	\$0.00	\$0.00
Campus Serenaders	\$578.00	25	0	\$23.12	\$578.00	\$0.00
Concert Choir	\$9,548.00	30	4	\$280.82	\$8,424.71	\$1,123.29
Executive Board	\$7,257.71	12	2	\$518.41	\$6,220.89	\$1,036.82
Experimental Error	\$340.00	9	0	\$37.78	\$340.00	\$0.00
GM Week	\$38,880.00	17	1	\$2,160.00	\$36,720.00	\$2,160.00
Jazz Ensemble	\$13,067.40	45	2	\$278.03	\$12,511.34	\$556.06
Judicial Board	\$1,691.91	8	3	\$153.81	\$1,230.48	\$461.43
Pep Band	\$12,214.00	105	6	\$110.04	\$11,553.78	\$660.22
Percussion Ensemble	\$6,179.00	10	0	\$617.90	\$6,179.00	\$0.00
Performing Arts Committee	\$8,118.00	0	0	\$0.00	\$0.00	\$0.00
Players	\$17,216.50	83	5	\$195.64	\$16,238.29	\$978.21
Polytechnic	\$0.00	7	1	\$0.00	\$0.00	\$0.00
Publicity Committee	\$4,025.00	1	1	\$2,012.50	\$2,012.50	\$2,012.50
Red Army	\$2,359.00	35	0	\$67.40	\$2,359.00	\$0.00
Rensselyrics	\$8,069.20	11	0	\$733.56	\$8,069.20	\$0.00
RPI Ambulance	\$14,846.86	67	2	\$215.17	\$14,416.52	\$430.34
RPI TV	\$10,281.00	74	3	\$133.52	\$9,880.44	\$400.56
Sheer Idiocy	\$559.02	7	0	\$79.86	\$559.02	\$0.00
Statler & Waldorf	\$18,721.00	27	1	\$668.61	\$18,052.39	\$668.61
Student Senate	\$9,463.56	26	4	\$315.45	\$8,201.75	\$1,261.81
Symphonic Band	\$5,489.50	93	7	\$54.90	\$5,105.24	\$384.27
Symphony Orchestra	\$801.90	81	8	\$9.01	\$729.82	\$72.08
TerraCafe	\$1,592.00	37	3	\$39.80	\$1,472.60	\$119.40
Union Speakers Forum	\$37,704.00	3	0	\$12,568.00	\$37,704.00	\$0.00
UPAC Cinema	\$31,700.00	19	1	\$1,585.00	\$30,115.00	\$1,585.00
UPAC Comedy	\$25,653.94	12	0	\$2,137.83	\$25,653.94	\$0.00
UPAC Concerts	\$49,858.00	52	0	\$958.81	\$49,858.00	\$0.00
UPAC General	\$5,305.00	1	1	\$2,652.50	\$2,652.50	\$2,652.50
UPAC Lights	\$8,566.00	30	1	\$276.32	\$8,289.68	\$276.32
UPAC Mothers	\$16,382.00	1	1	\$8,191.00	\$8,191.00	\$8,191.00
UPAC Sound	\$15,420.00	36	0	\$428.33	\$15,420.00	\$0.00
UPAC Summer	\$19,525.00	0	0	\$0.00	\$0.00	\$0.00
WRPI	\$41,698.36	36	2	\$1,097.33	\$39,503.71	\$2,194.65
<b>TOTALS</b>	<b>\$448,824.76</b>	<b>1022</b>	<b>60</b>		<b>\$390,049.57</b>	<b>\$27,307.19</b>

## APPENDIX D. Intercollegiate Athletics (ICA) Summary

Budget	Expenses						Incomes			FY11 Subsidy	\$ Chg	% Chg
	FY10 Subsidy	Non-Salary	Salary	Benefits	Transfers	Total	Revenue	Transfers	Total			
<b>General</b>	162,119.00	82,200.00	55,237.00	16,682.00	20,000.00	174,119.00	0.00	0.00	0.00	174,119.00	12,000.00	7.40%
<b>Football</b>	126,613.00	100,043.00	31,000.00	9,362.00	0.00	140,405.00	10,000.00	0.00	10,000.00	130,405.00	3,792.00	2.99%
<b>Men's Soccer</b>	41,348.00	38,421.00	4,600.00	1,389.00	0.00	44,410.00	0.00	0.00	0.00	44,410.00	3,062.00	7.41%
<b>Cross-Country</b>	26,124.00	23,044.15	0.00	0.00	0.00	23,044.15	0.00	0.00	0.00	23,044.15	-3,079.85	-11.79%
<b>Men's Basketball</b>	39,982.00	38,064.00	4,600.00	1,389.00	0.00	44,053.00	0.00	0.00	0.00	44,053.00	4,071.00	10.18%
<b>Swimming</b>	71,543.00	62,800.00	9,200.00	2,778.00	0.00	74,778.00	0.00	0.00	0.00	74,778.00	3,235.00	4.52%
<b>Women's Basketball</b>	37,423.00	42,426.00	0.00	0.00	0.00	42,426.00	0.00	0.00	0.00	42,426.00	5,003.00	13.37%
<b>Men's Ice Hockey</b>	376,527.00	491,483.48	0.00	0.00	6,500.00	497,983.48	95,000.00	0.00	95,000.00	402,983.48	26,456.48	7.03%
<b>Baseball</b>	64,954.00	62,977.80	9,200.00	2,778.00	0.00	74,955.80	0.00	0.00	0.00	74,955.80	10,001.80	15.40%
<b>Golf</b>	14,731.00	9,376.15	4,700.00	1,419.00	0.00	15,495.15	2,500.00	0.00	2,500.00	12,995.15	-1,735.85	-11.78%
<b>Men's Lacrosse</b>	50,780.00	49,430.00	0.00	0.00	0.00	49,430.00	0.00	0.00	0.00	49,430.00	-1,350.00	-2.66%
<b>Men's Tennis</b>	16,274.00	11,077.10	2,300.00	695.00	0.00	14,072.10	0.00	0.00	0.00	14,072.10	-2,201.90	-13.53%
<b>Track</b>	118,841.00	102,453.80	19,400.00	5,859.00	0.00	127,712.80	0.00	0.00	0.00	127,712.80	8,871.80	7.47%
<b>Field Hockey</b>	38,950.00	30,791.00	4,600.00	1,389.00	0.00	36,780.00	0.00	0.00	0.00	36,780.00	-2,170.00	-5.57%
<b>Women's Tennis</b>	20,087.00	13,135.80	2,300.00	695.00	0.00	16,130.80	180.00	0.00	180.00	15,950.80	-4,136.20	-20.59%
<b>Softball</b>	32,014.00	33,378.65	4,600.00	1,389.00	0.00	39,367.65	0.00	0.00	0.00	39,367.65	7,353.65	22.97%
<b>Invitational Hockey</b>	0.00	0.00	0.00	0.00	0.00	0.00	0.00	0.00	0.00	0.00	0.00	N/A
<b>Women's Soccer</b>	37,280.00	33,450.00	4,600.00	1,389.00	0.00	39,439.00	0.00	0.00	0.00	39,439.00	2,159.00	5.79%
<b>Women's Lacrosse</b>	27,527.00	24,883.00	4,600.00	1,389.00	0.00	30,872.00	0.00	0.00	0.00	30,872.00	3,345.00	12.15%
<b>Women's Ice Hockey</b>	155,451.00	285,170.96	0.00	0.00	0.00	285,170.96	0.00	120,165.00	120,165.00	165,005.96	9,554.96	6.15%
<b>Training Room</b>	26,304.00	28,804.00	0.00	0.00	0.00	28,804.00	0.00	0.00	0.00	28,804.00	2,500.00	9.50%
<b>Strength &amp; Conditioning</b>	0.00	11,432.10	0.00	0.00	0.00	11,432.10	0.00	0.00	0.00	11,432.10	11,432.10	N/A
<b>Hockey Surcharge</b>	0.00	0.00	0.00	0.00	0.00	0.00	0.00	0.00	0.00	0.00	0.00	N/A
<b>Sports Information</b>	16,220.00	17,000.00	0.00	0.00	0.00	17,000.00	0.00	0.00	0.00	17,000.00	780.00	4.81%
	1,501,092.00	1,591,841.99	160,937.00	48,602.00	26,500.00	1,827,880.99	107,680.00	120,165.00	227,845.00	1,600,035.99	98,943.99	6.59%

### Recent History of the ICA Budget





## 2009-2010

### Fiscal Policy Sub-Committee

Andrew Armenia B.S. '08, M.S. '10  
Chris Butler '10  
Charles Emala '10  
Alex Franz '10, President of the Union (Ex-Officio)  
Nicole Gallant '13  
Joshua Greenman B.S/M.S. '10  
Richard Hartt '70, Director of the Union (Advisor)  
Tequisha Hendrickson '10, Senate/E-Board Liaison  
Virginia Hickox '12  
Ken Hyer '10  
Kyle MacKenzie '10  
Martha McElligott, Business Administrator (Advisor)  
Andrew Neidhardt '11  
Michael Spitz '11  
Brian R Zaik B.S/M.S. '10, Senile Dinosaur  
Michael Zwack '11, Grand Marshal (Ex-Officio)

### Executive Board of the Union

Reginald Askew '11  
Stefan Dicker '12  
Joshua Elser '10  
Alex Franz '10, President of the Union (Ex-Officio)  
Nicole Gallant '13  
Joshua Greenman B.S/M.S. '10  
Richard Hartt '70, Director of the Union (Advisor)  
Tequisha Hendrickson '10, Senate/E-Board Liaison  
Virginia Hickox '12  
Ken Hyer '10  
Rohit Kumar '11  
Joseph Perchiacca B.S. '08, Ph.D '12  
Michael Spitz '11  
Brian R Zaik B.S/M.S. '10

## Questions?

Have an issue with a number, calculation, graph, or paragraph in this document? We'd like to hear from you!

Contact the Fiscal Policy Sub-Committee of the Rensselaer Union at [activity-fee@union.rpi.edu](mailto:activity-fee@union.rpi.edu)!